

## PRODUCT SPECIFICATIONS

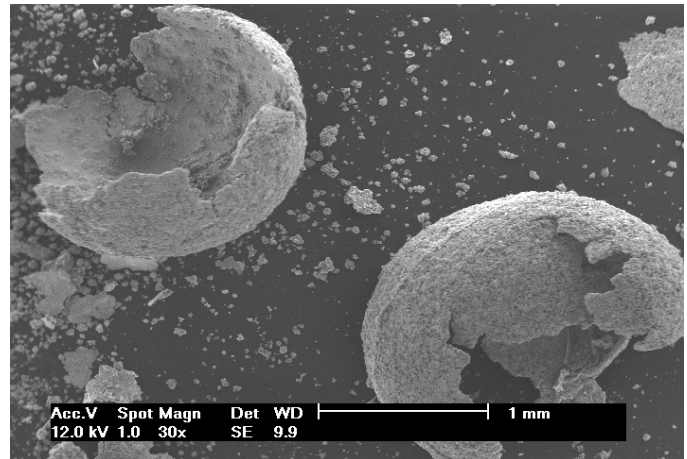
### ELSA COPPER POWDER

#### Typical analysis

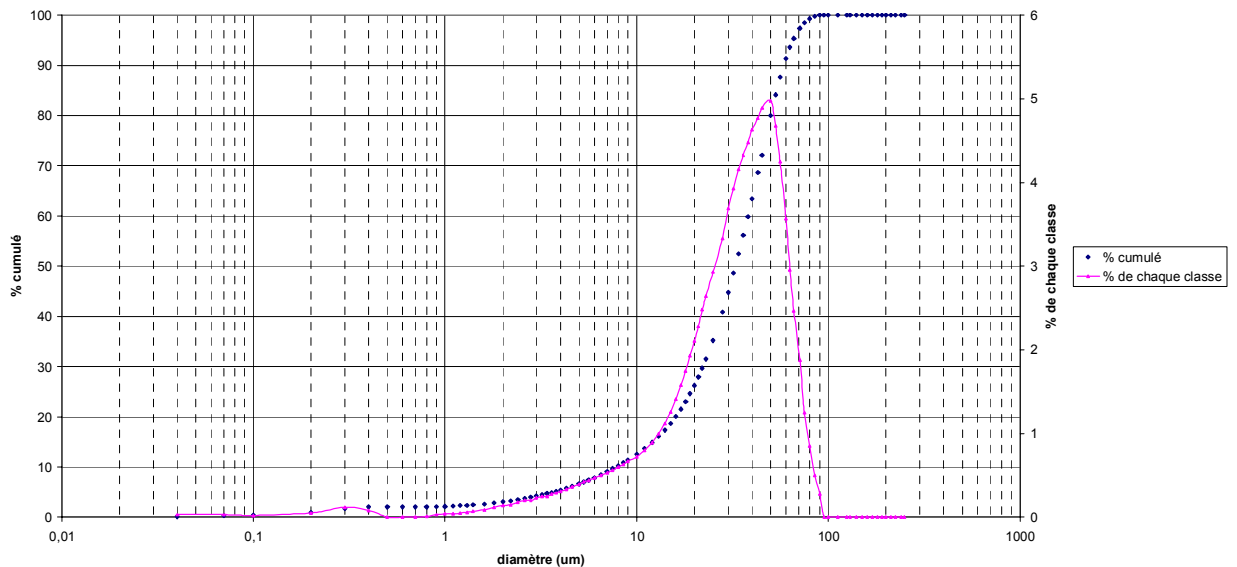
Cu: 99.2% min. of dry material  
Fe: Balance  
Moisture: around 10%

#### Physical specification

Form: Empty half shelves



#### Granulometry:



#### Origin

Hydrometallurgical extraction through the patented ELSA Optimized Cementation technology: cementation on iron in a fluidized bed followed by extraction by ultra-sonic agitation and filtration.

#### Packaging

2 metric tone sealed bags on wooden pallets  
By 20 tone lot in 20" containers